

# Sustainable Agriculture Program

November, 2021

# Sustainable Agriculture Program

## Partnership between Leduc and Wetaskiwin Counties

The sustainable agriculture program promotes the awareness and adoption of beneficial management practices to resident farmers through education and outreach.

The sustainable agriculture coordinator is a shared employee whose actions include:

- Information sessions and workshops
- ASB News and Views, bi-annual newsletter
- Environmental Farm Plan support and reviews
- Provincial grant application support, when available
- Alternative Land Use Services (ALUS)



# Environmental Farm Plan

[www.AlbertaEFP.com](http://www.AlbertaEFP.com)

*EFP technician for County of Wetaskiwin and Leduc County*



## BENEFITS

- Demonstrates environmental stewardship
- Understand and reduce environmental risks
- Reduce costs, increase efficiency, access funding
- Use as future planning tool



# Canadian Agricultural Partnership

[www.cap.alberta.ca](http://www.cap.alberta.ca)



- Current suite of programs available until March, 2023
- An EFP is required to receive funding for some of the farmer related programs on offer





# ALUS

**Where AGRICULTURE & NATURE Meet**

---



# What is ALUS?



- A program for active farmers
- Available in communities across Canada
- Works within agricultural landscapes



# What is ALUS?

- Pays farmers who produce ecosystem services on their farms
- ALUS does this by cost sharing on projects and provides a yearly, per acre payment for project acres involved.



# What is ALUS?

## Who Funds it?



- W. Garfield Weston Foundation is principal funder since inception
- Foundational partners (\$1 m or more) – Delta Waterfowl and Canada's National Conservation Plan
- Local communities and grants





# What is ALUS?

## Who funds it?

- ALUS Canada has developed the New Acre™ Project (NAP)
- NAP is a new corporate sponsorship program
- New funding stream that will help fund ALUS programs throughout Canada
- National team continues work on development



# Wetaskiwin-Leduc ALUS

## Program history



- Signed first memorandum of understanding with national program in December 2015
- Over 1000 acres enrolled in the program after six seasons



# Why Wetaskiwin-Leduc ALUS?

- Natural complement to existing sustainable agriculture program
- ALUS provides support to local farmers and benefits the whole community



# Wetaskiwin-Leduc ALUS

## Who is eligible?

- *Only farmers or ranchers with land in Wetaskiwin or Leduc County*
- *Definition of a farmer – minimum of \$10,000 gross farm commodity income*
  - *A new project has to be established to enroll acres*



# ALUS Projects

ALUS projects enhance, restore or create more nature

*For acres to be enrolled, there has to be something new added to what already exists*



# WHAT PROJECTS HAVE BEEN SUPPORTED?

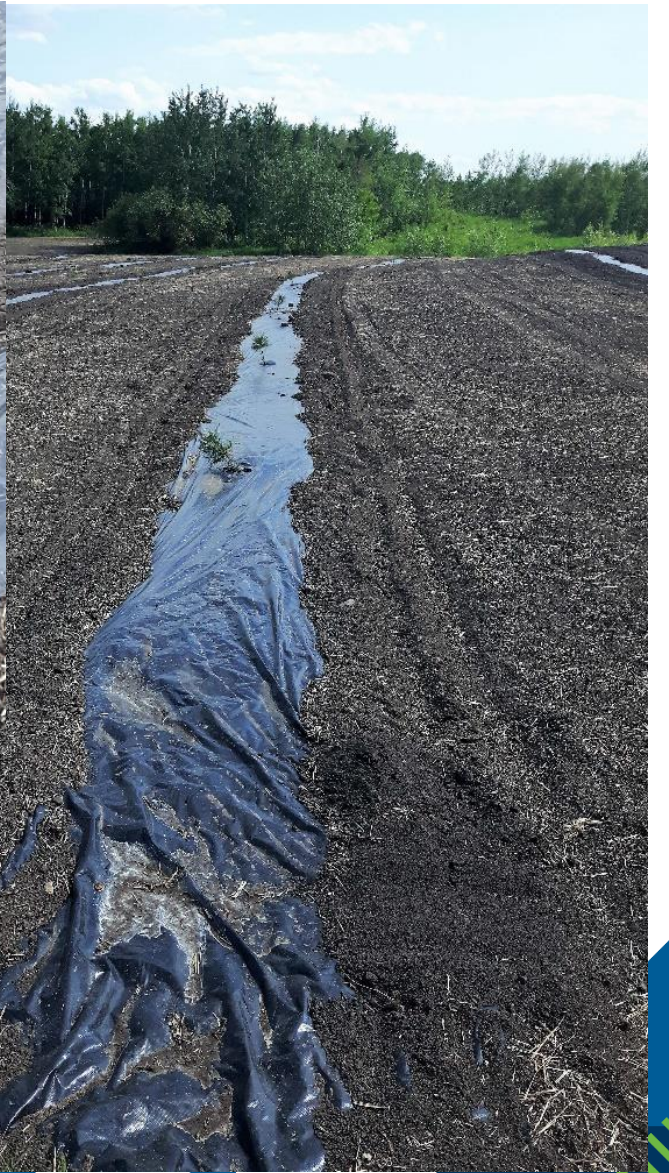


Some photos courtesy of *Sarah C's Photography*





**Riparian fencing-Washout Creek and watering systems**



**Shelterbelt/eco-buffer**





**2015**



**2018**

*Photos courtesy of Kerri O'Shaughnessy, Cows and Fish*





# SOME OF OUR FARMERS



Some photos courtesy of Sarah C's Photography



# Sustainable Agriculture Program

## Coordinator contact information

Kim Barkwell

- Ph: 780-387-6182
- Email: [kimb@leduc-county.com](mailto:kimb@leduc-county.com) or [kbarkwell@county10.ca](mailto:kbarkwell@county10.ca)





LEDUC  
COUNTY



**Thank you.**  
**Any questions?**